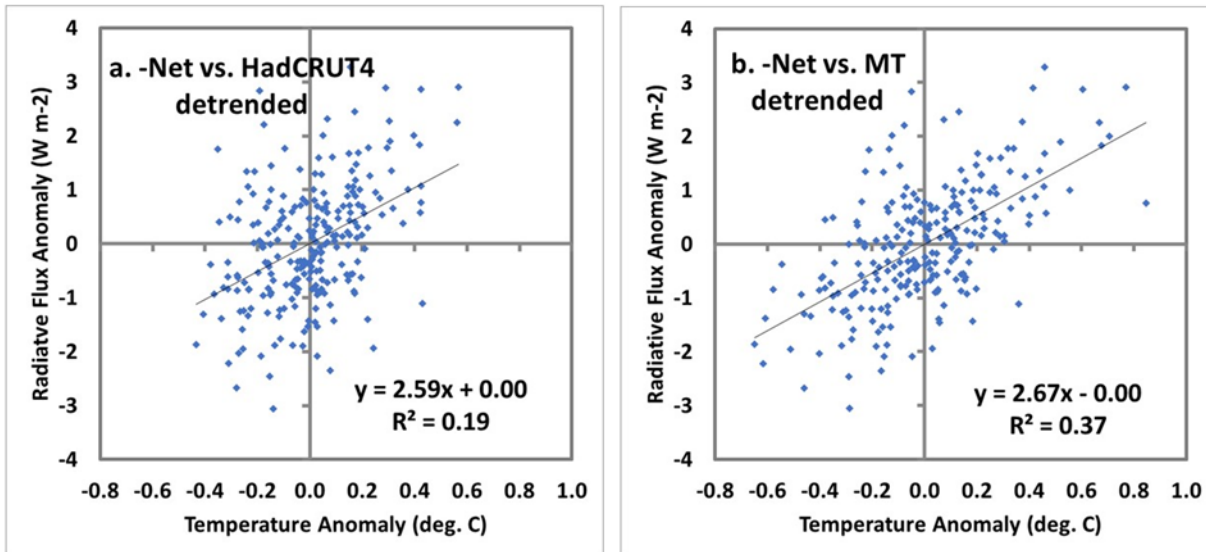


# Validation of CMIP5 Tropical Fast Feedback Processes and Comparison to Temperature Trends

R. W. Spencer and J. R. Christy

1. 20 years of 'fast' radiative feedback parameters in the tropics have higher R2 using tropospheric temperatures rather than (lagged) surface temperatures

## OBSERVATIONS: CERES vs. HadCRUT4 & UAH MT



2. MT trends (1979-2018) are roughly consistent with Net feedback parameter from CERES, given the CMIP5 relationships between MT and radiative flux

3. Fast feedback disagreement between obs and models is LW only

