

Classifying coastal environments on Alaska's North Slope

Anastasia Piliouras¹, Ben Jones², Tabatha Clevenger^{1,3}, Billy Eymold⁴,
Diana Bull⁴, Alec Bennett², Vladimir Alexeev², Joel Rowland¹

¹Los Alamos National Laboratory

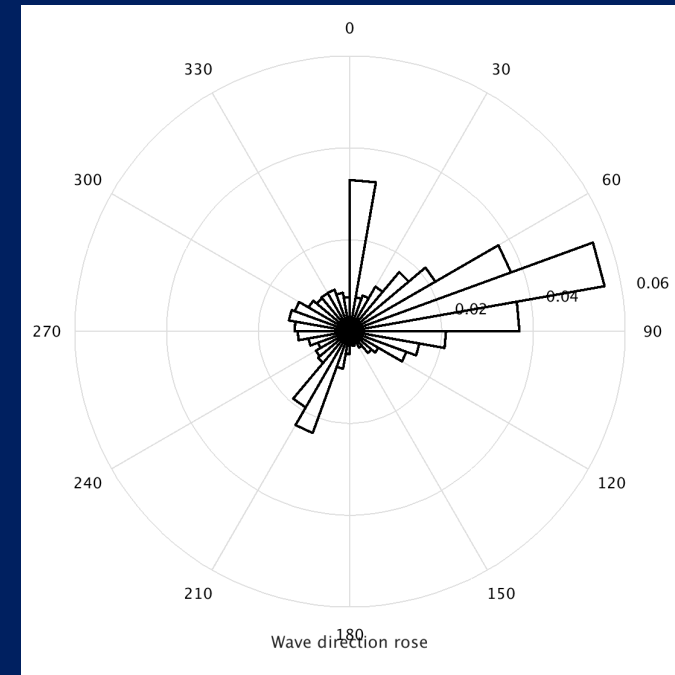
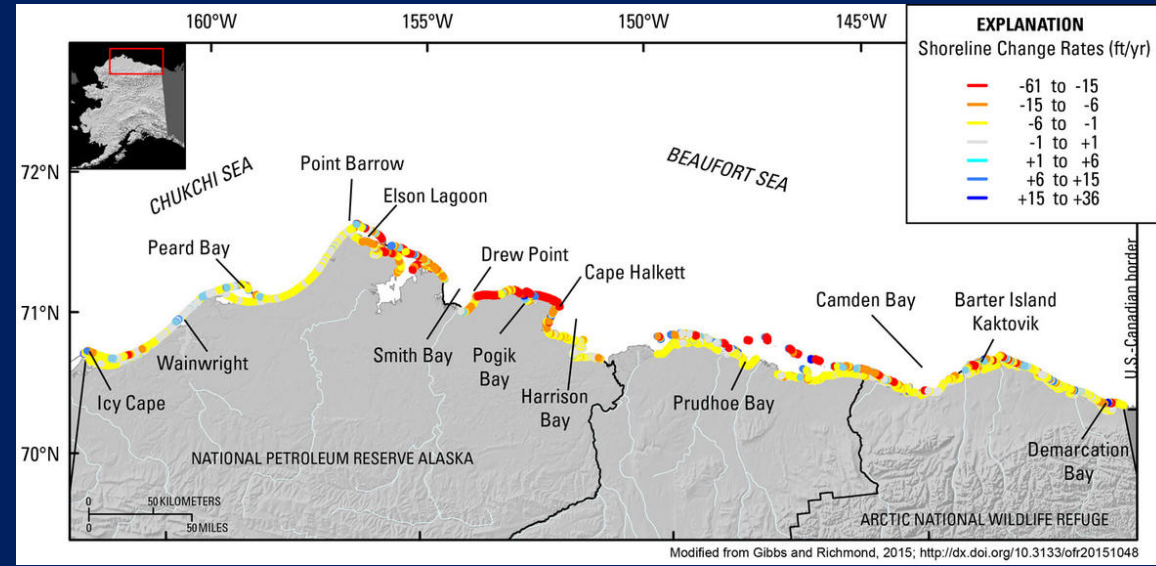
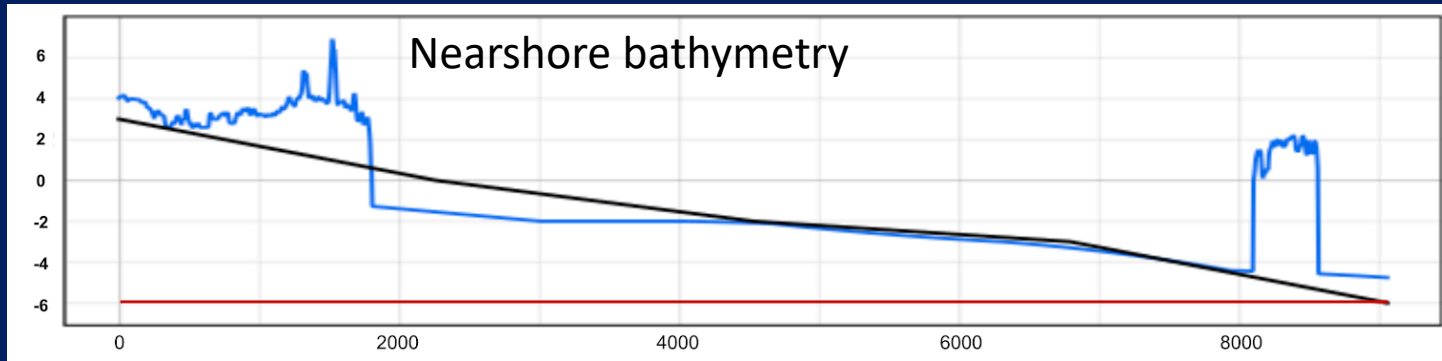
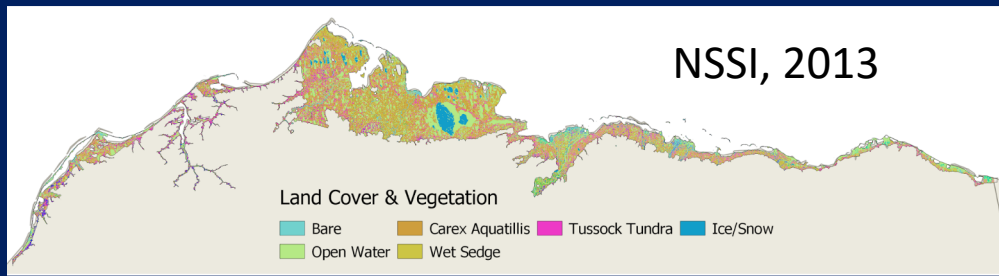
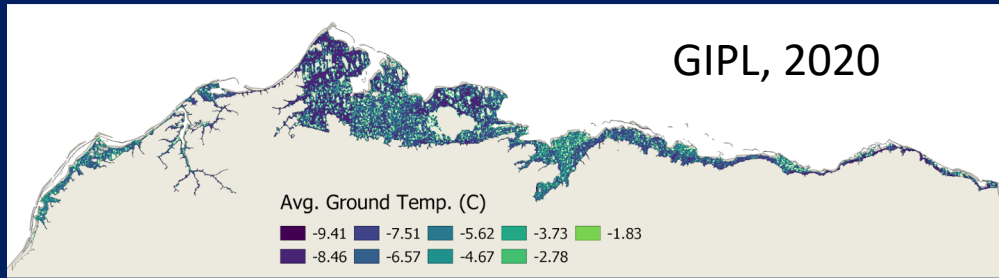
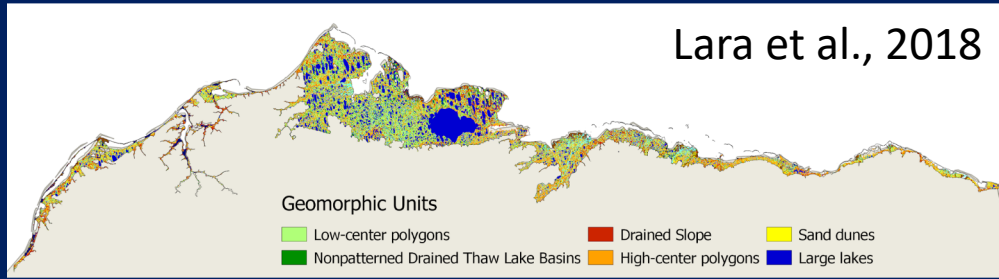
²University of Alaska, Fairbanks

³Vassar College

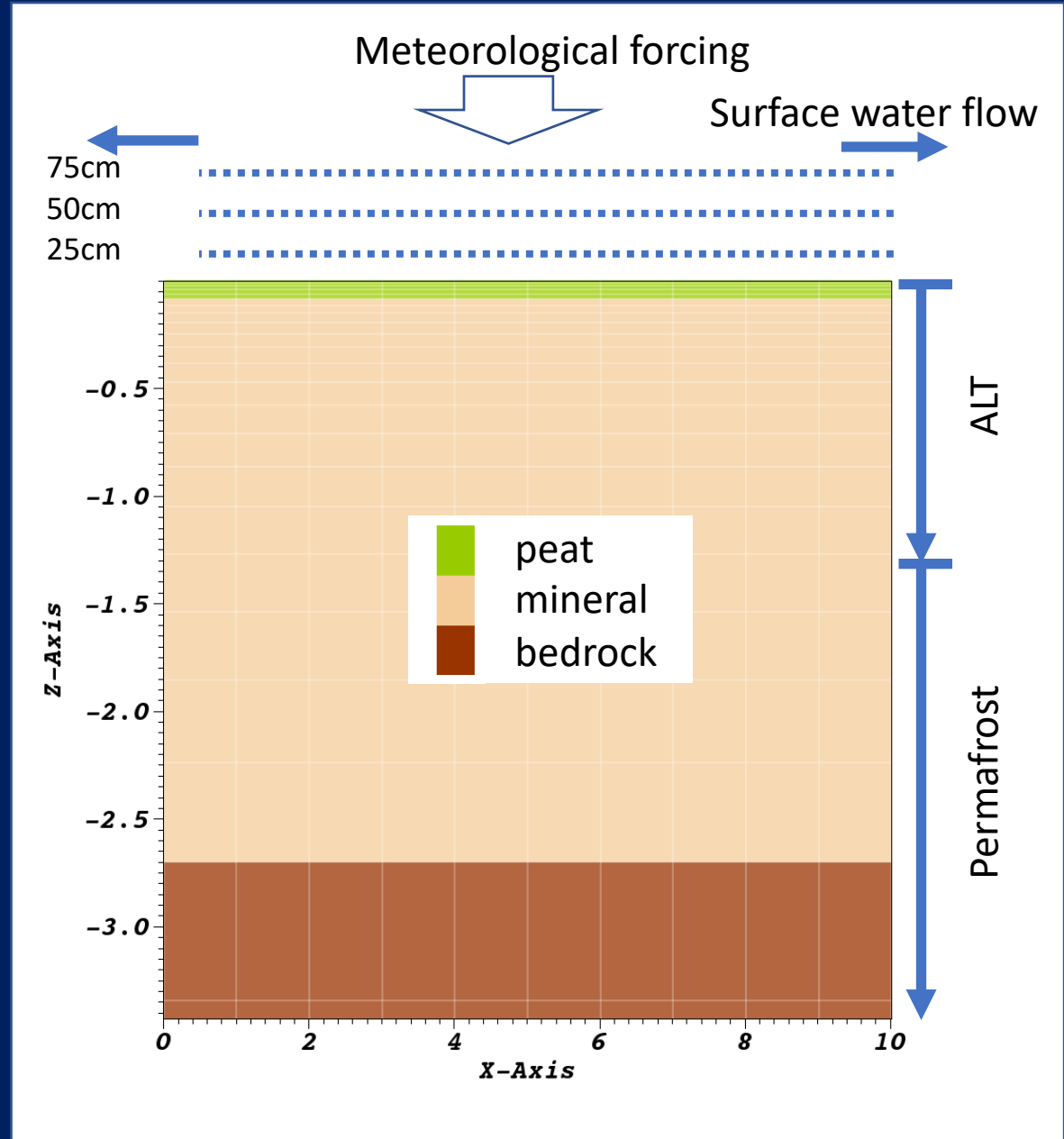
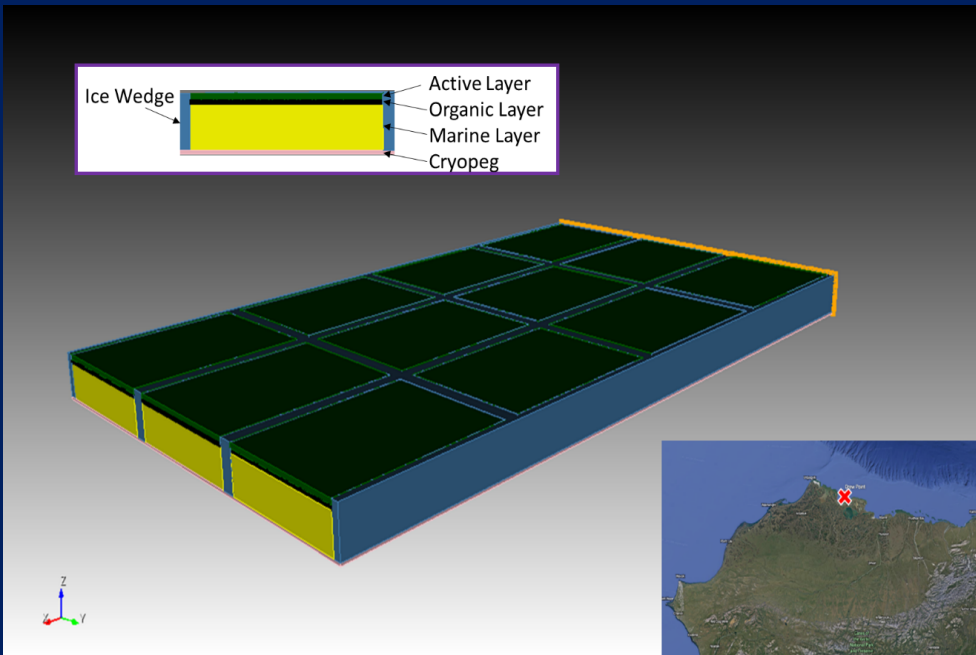
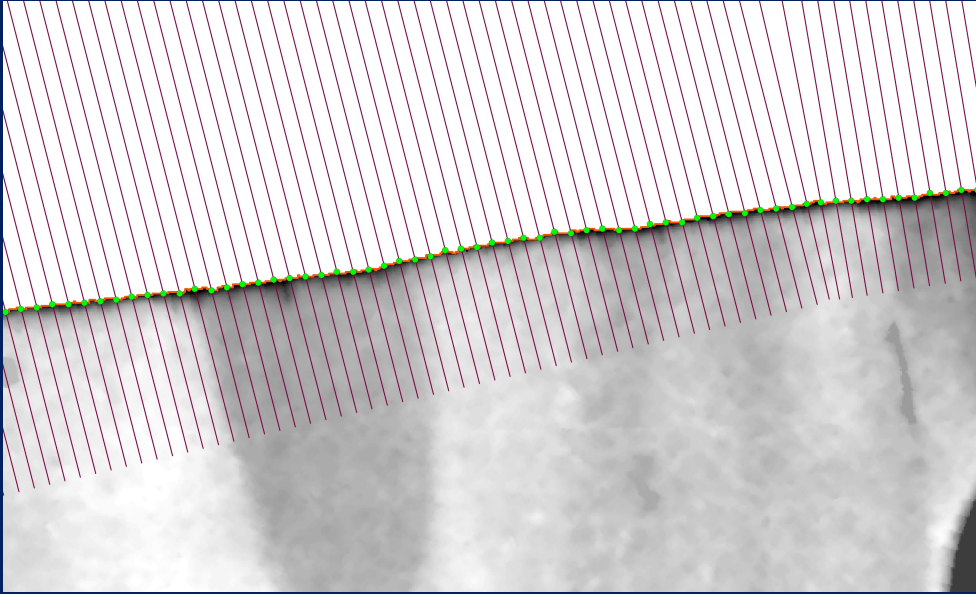
⁴Sandia National Laboratory



Alaska's North Slope has a wide range of conditions



Developing coastal typologies for generalized modeling



Challenges

- Lack of spatially extensive and temporally continuous observational data to parameterize and validate models
- Differences of scale for many processes, characteristics, and drivers at the coast
- Identifying, understanding, and quantifying critical process dynamics to develop parameterizations
- Quantifying sensitivity of marine ecosystems to coastal fluxes to identify modeling gaps/inadequacies
- Quantifying land-ocean feedbacks without fully/properly coupled models and without accurate process representations in ESMs