



BERKELEY LAB

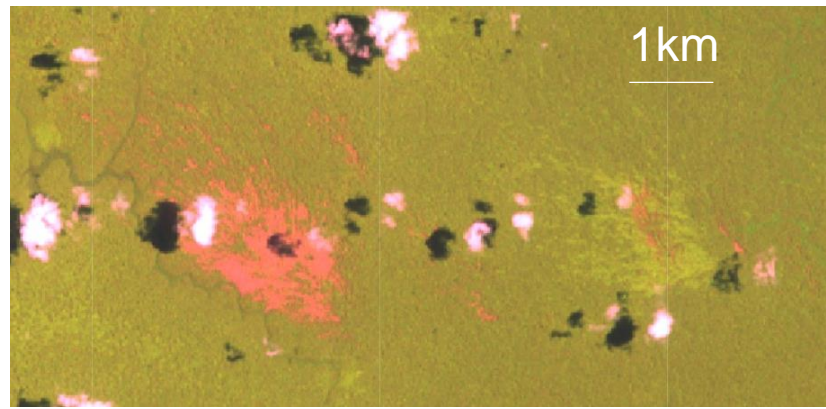
The Association Between Extreme Rainfall Events and Forest Dynamics in the Amazon

Robinson Negrón-Juárez, Shuyue Li, Daniel Magnabosco Marra, Géraldine Derroire, Bruno Hérault, Ervan Rutishauser, Damien Bonal, Chris Peterson, William J. Riley, David Medvigy, Jeffrey Q. Chambers

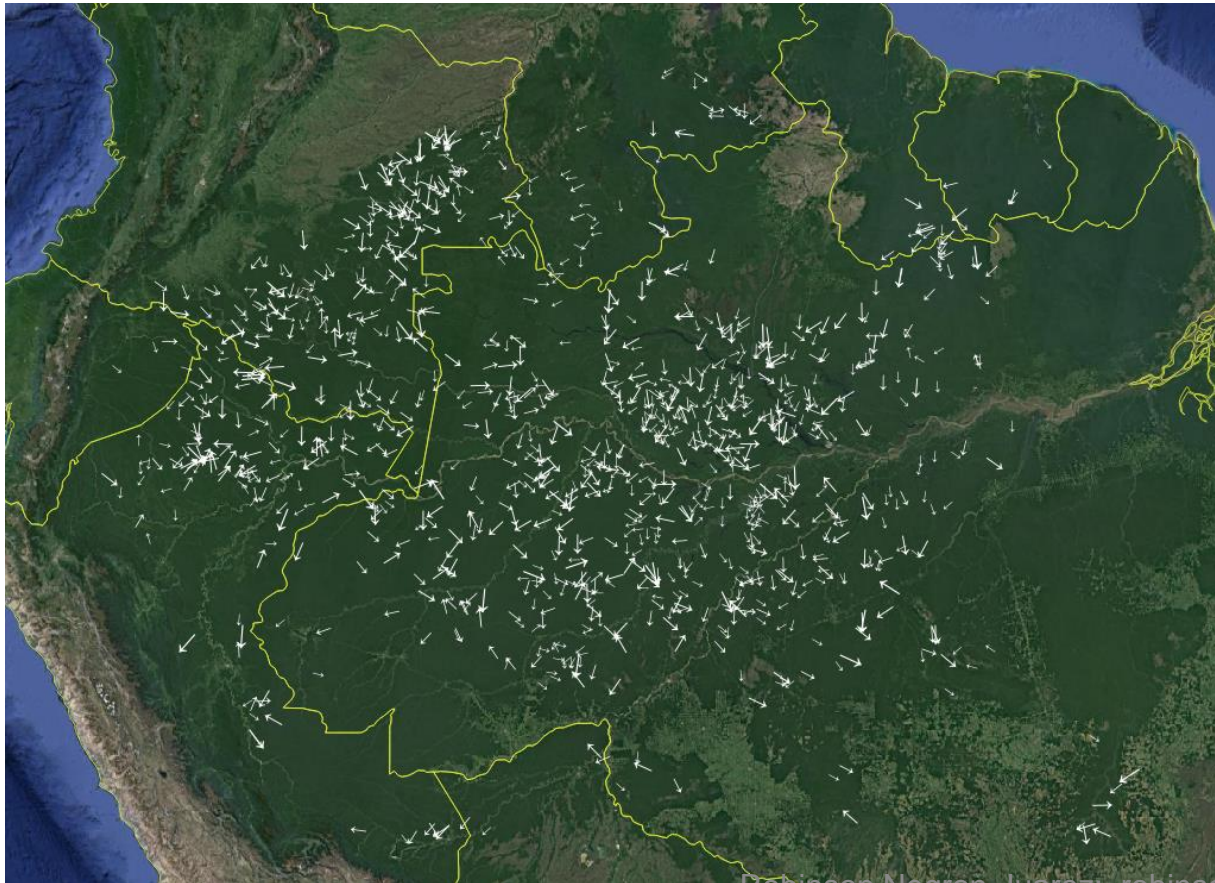
2020-10-13



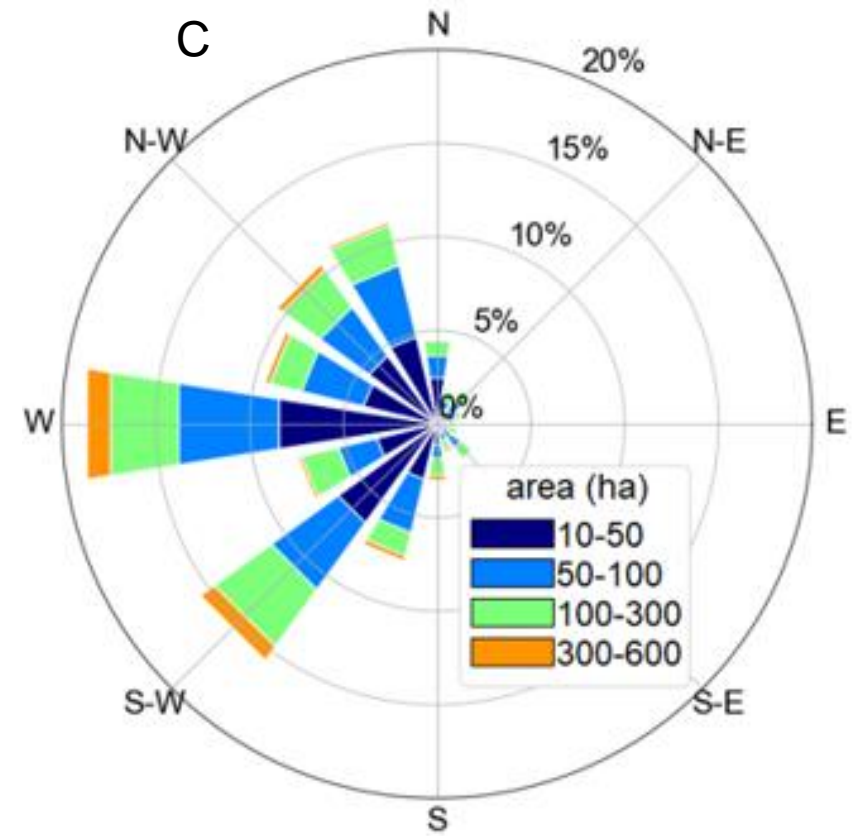
A

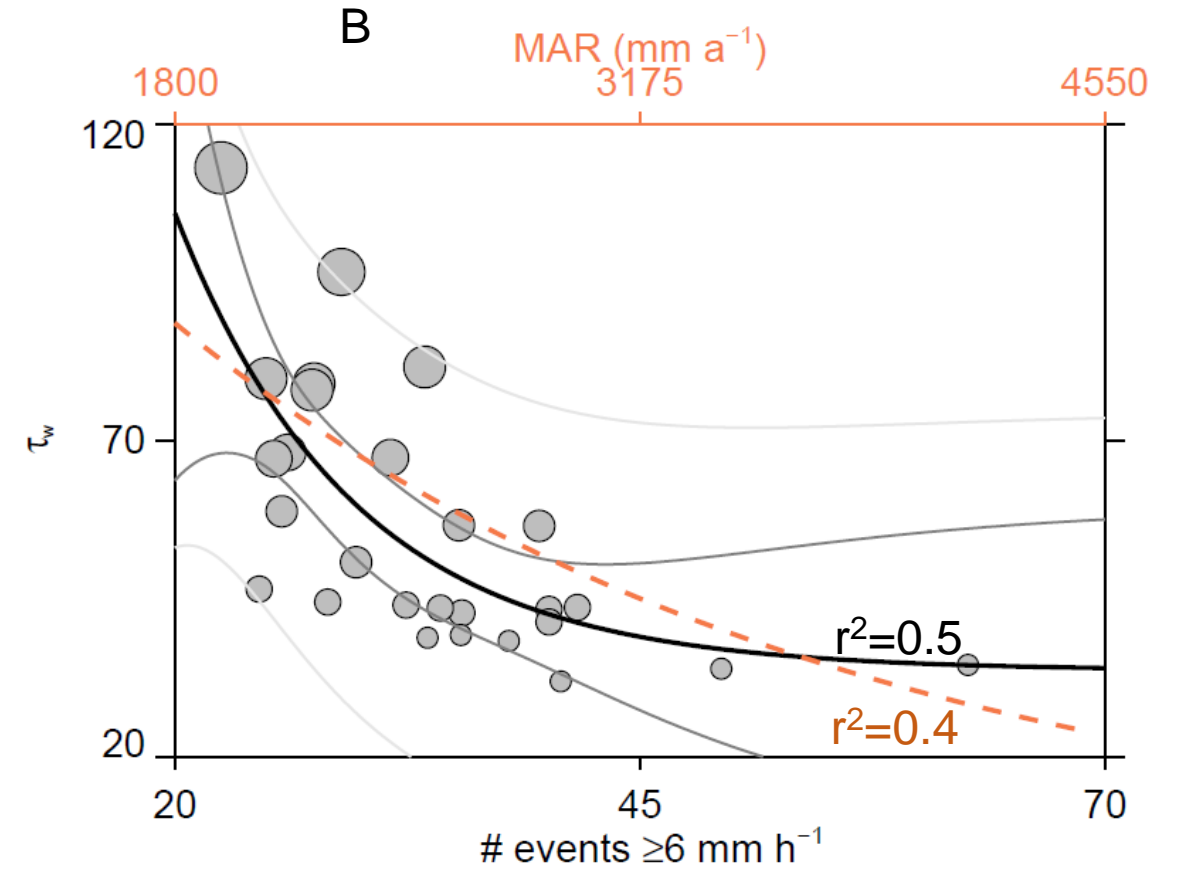
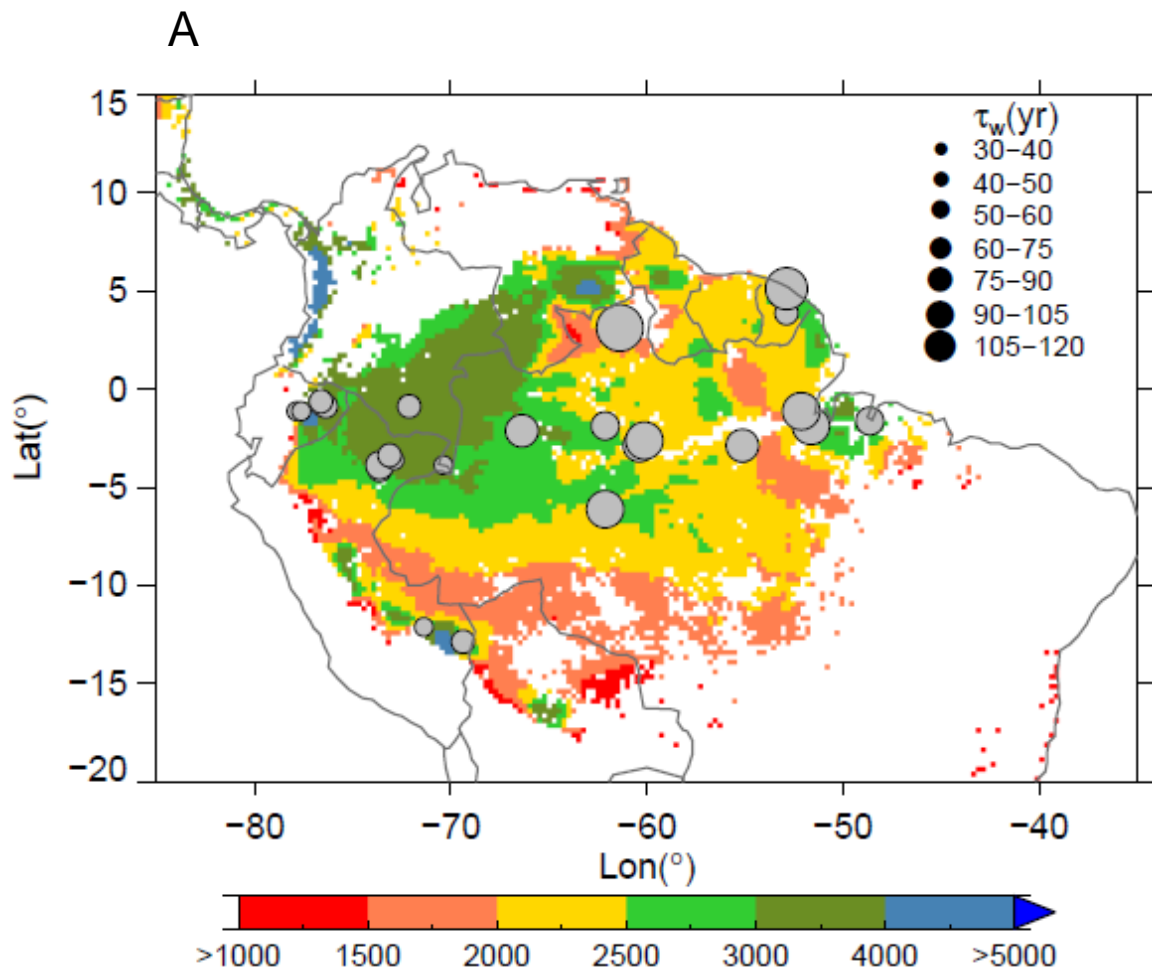


B

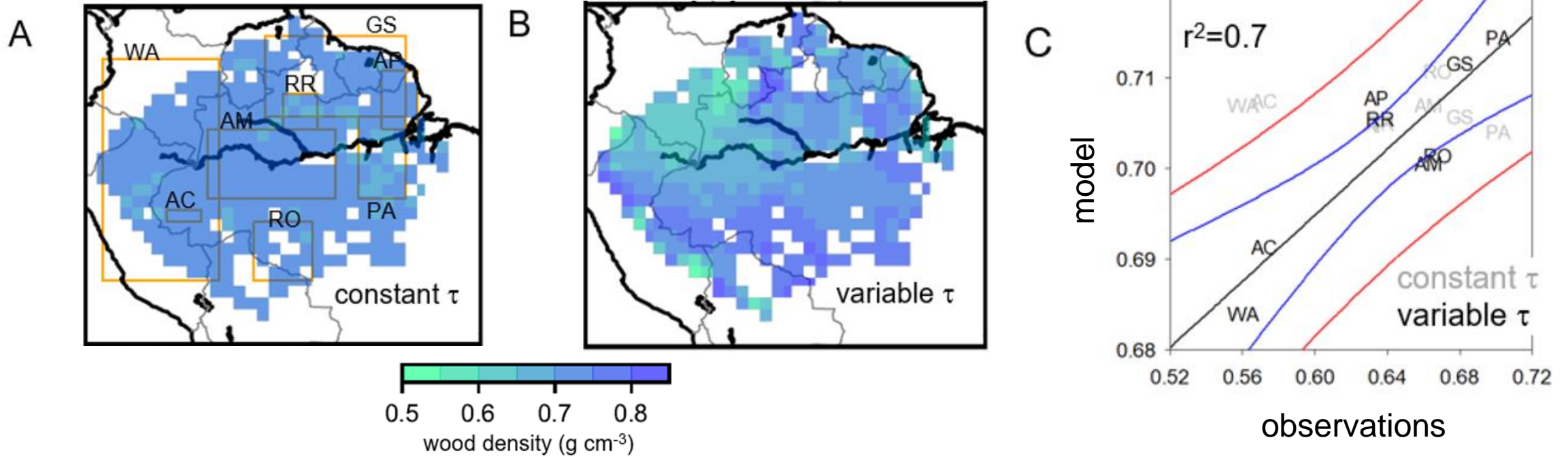


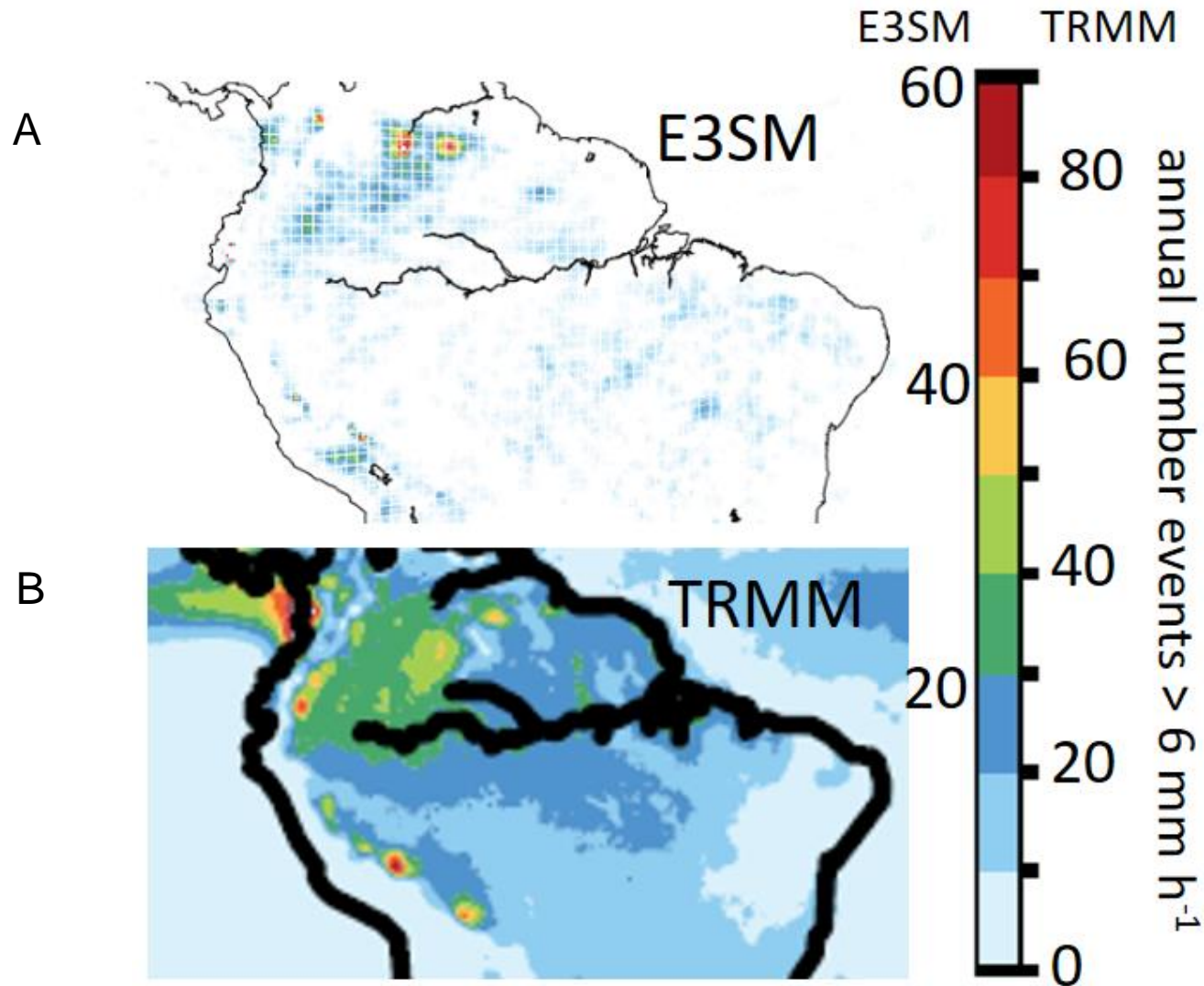
C





Climatological (1998-2019) number of rainfall events $\geq 6 \text{ mm}$. Rainfall data from TRMM 3h.





ARM field campaign?

Comparison of Amazon extreme rainfall events ($> 6 \text{ mm/h}$) using E3SM (3h, 0.25° , 1 year) and TRMM (3h, 0.25° , period 1998-2018). Extreme rainfall events produce strong downbursts resulting in windthrows (uprooted and broken trees).