

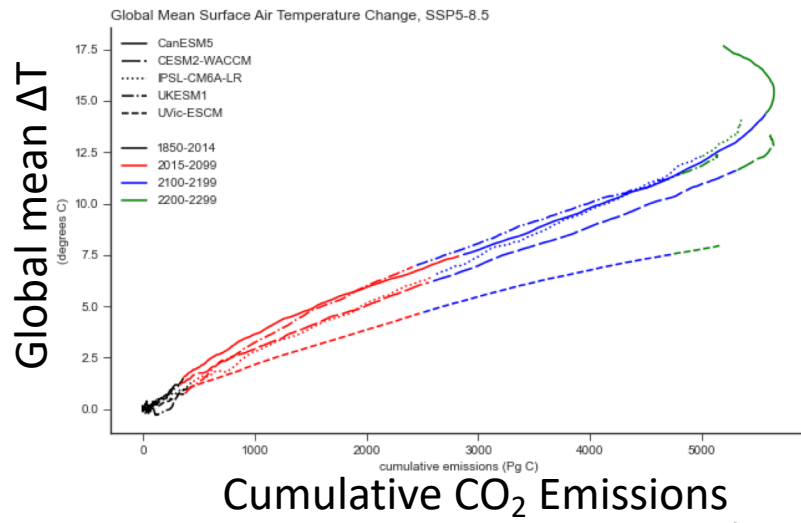
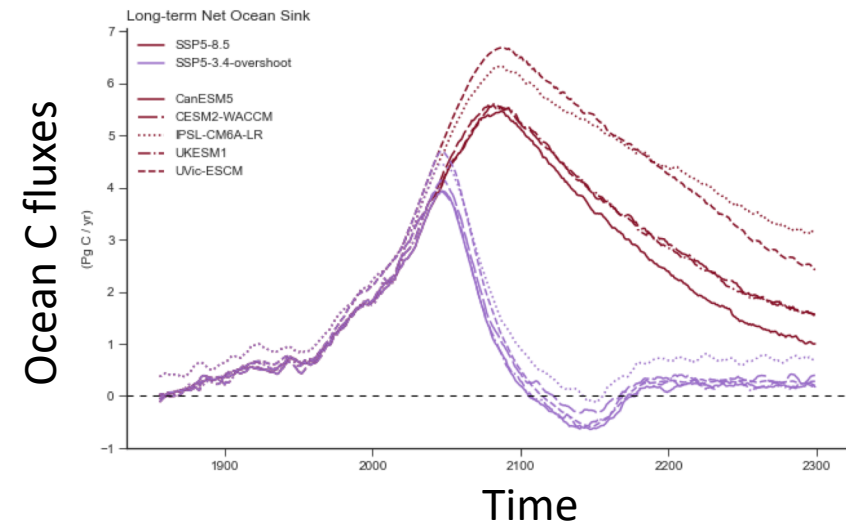
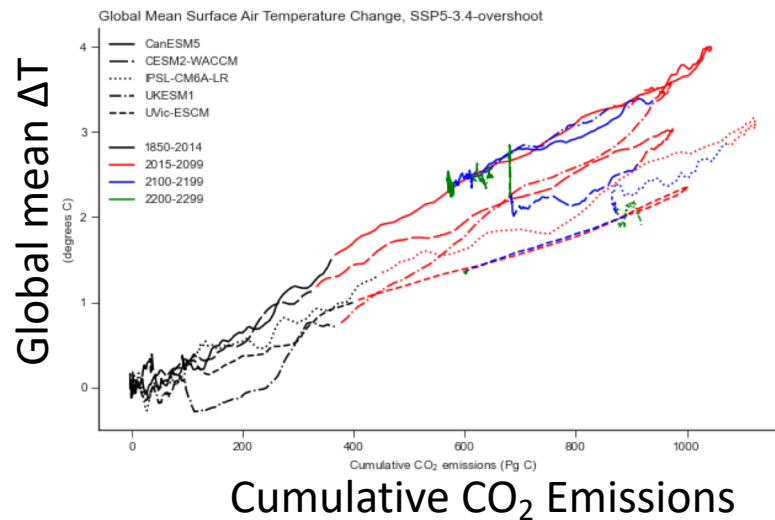
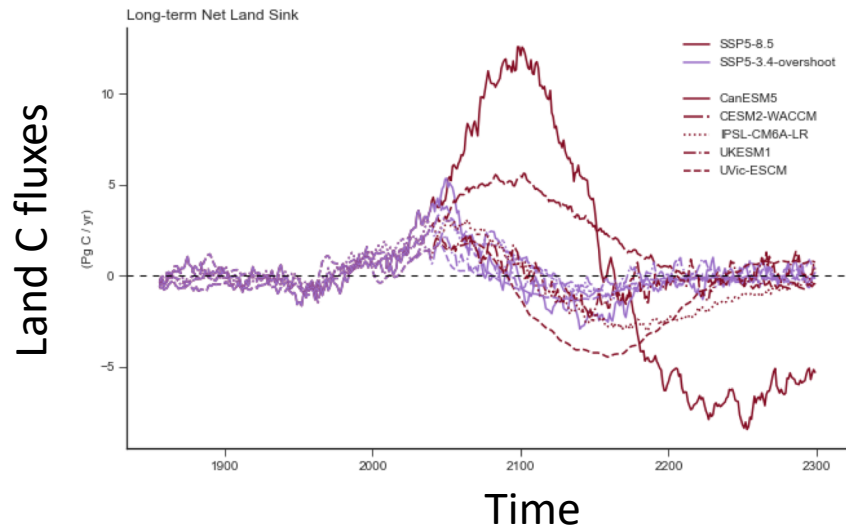
Carbon and climate dynamics of CMIP6 models in SSP scenarios beyond 2100

C. Koven & many many others

RGMA PI meeting

Oct. 12, 2020

What are the long-term dynamics of the carbon and climate systems, and where are the points of model agreement and disagreement?



Future research and relationship to white paper

- How do the constraints on model behavior placed by observational benchmarks differ based on timescale, from short (decades) to medium (this century) to long (beyond this century)?
- How does parameter uncertainty vary on different timescales?
- How predictive is model behavior at one time period for model behavior at another time period?
- What aspects of coupled climate and carbon cycle behaviors are path-dependent and what are path-independent on these longer timescales?